

SOOTHING SEIZURES

Epilepsy and other seizure disorders can be frightening and their causes hard to nail down. Acupressure is a gentle and simple way to alleviate these conditions.

BY AMY SNOW & NANCY ZIDONIS



Using the thumb method during a treatment.

It was late in the evening and time to get ready for bed. Spencer, our six-year old greyhound, trooped out to the backyard with our three other dogs to take care of business. The other dogs bounced back into the house as usual after a few minutes, but Spencer was not with them.

In the next instant, we heard a commotion out on the patio. We ran out the back door to find Spencer lying on his side on the flagstones, writhing uncontrollably and salivating. His eyes were half closed and glassy and we knew immediately he was having a seizure. All we could do was clear the area so he wouldn't hurt himself.

The entire seizure episode probably took less than two minutes, but when your dog is having one, especially for the first time, it's frightening and feels like hours. We

knew not to panic and to keep Spencer as safe as possible, but we wanted to help him and reduce the effects of the seizure. We also knew if this was the first, there would probably be more.

WHAT CAUSES SEIZURE DISORDERS?

A seizure is a neurological dysfunction or misfiring of the neurons most often in the cerebrum section of the brain. Studies show that the chemical balance of the neurotransmitters is compromised. Some dogs experience mild seizures while others endure lengthy, more severe episodes. Unfortunately, there is another category of more extreme situations when a dog is stricken in quick succession with severe, relentless seizures that often result in death.

The veterinary community is not exactly sure why dogs

experience seizures, nor why the number of dogs with seizure disorders is on the rise. There are many possible triggers, including hereditary defects, toxins (household cleaners, tick repellents, fertilizers, foods, etc.), tumors, brain damage, hyper or hypothermia, certain medications, hormonal imbalance, distemper, Lyme disease, kidney disease, liver disease – the list goes on. Many seizure disorders are deemed “idiopathic”, meaning “unknown cause”, since it is difficult to track the pathology.

SEEK VETERINARY HELP FIRST

When your dog has a seizure, the first step is to consult with a holistic veterinarian and follow his/her recommendations. Usually, the dog will be given some form of anti-convulsant to help avoid or minimize future seizures. As an initial method of controlling the episodes, this is the most reasonable way to help your dog.

While he is taking the prescribed medication and following your vet’s recommendations, you might want to turn to canine acupressure to help mitigate the severity and duration of the seizures, and the use of drugs.

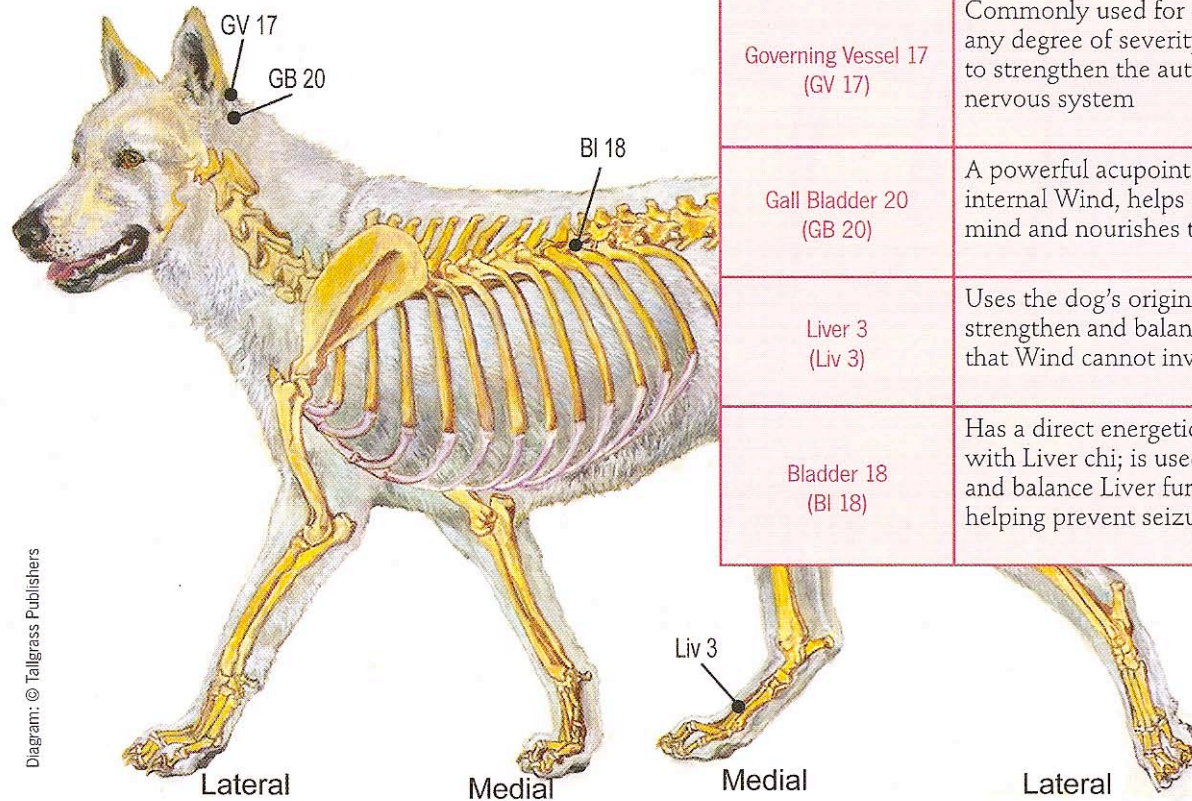
According to Chinese medicine, most seizure disorders are related to an invasion of Wind that affects the Liver organ system.

ACUPRESSURE AND SEIZURES

Acupressure has been used for thousands of years to maintain the health of animals and humans. This touch therapy is gentle and non-invasive, yet powerful. Acupressure is based on Traditional Chinese Medicine (TCM) concepts and theories.

According to Chinese medicine, most seizure disorders are related to an invasion of Wind that affects the Liver organ system. To the Western mind, associating wind with seizures may seem strange. Take a minute to picture a strong wind blowing the limbs of trees in all directions while other branches and dust are chaotically swirling in the air. Now have that wind blowing inside the dog’s body, creating a similar internal chaos and movement. The dog’s involuntary movements and loss of consciousness during a seizure are similar to the chaos created by a strong wind.

SEIZURE PREVENTATIVE CARE



ACUPOINT

CHARACTERISTICS

Governing Vessel 17
(GV 17)

Commonly used for epilepsy of any degree of severity, and known to strengthen the autonomic nervous system

Gall Bladder 20
(GB 20)

A powerful acupoint that dispels internal Wind, helps calm the mind and nourishes the brain

Liver 3
(Liv 3)

Uses the dog's original chi to strengthen and balance the Liver so that Wind cannot invade his body

Bladder 18
(BI 18)

Has a direct energetic connection with Liver chi; is used to enhance and balance Liver function, thus helping prevent seizures